



Order: (888)-282-5810 (Phone)
(818)-707-0392 (Fax)
order@abiocode.com
Web: www.Abiocode.com

GLE1 (C) Antibody, Rabbit Polyclonal

Cat#: R3578-1

Quantity: 100 ul

Predicted | Observed M.W.: 80 kDa

Lot#: Refer to vial

Application: WB

Uniprot ID: Q53GS7

Background:

Nucleoporin GLE1 is a polypeptide with high sequence and structure homology to yeast Gle1p, which is a nuclear protein with a leucine-rich nuclear export sequence essential for poly(A)+RNA export. Inhibition of human GLE1 by microinjection of antibodies against GLE1 in HeLa cells resulted in inhibition of poly(A)+RNA export. Immunofluorescence studies show that GLE1 is localized at the nuclear pore complexes. This localization suggests that GLE1 may act at a terminal step in the export of mature RNA messages to the cytoplasm.

Other Names:

Nucleoporin GLE1, GLE1L, hGLE1, LCCS1, GLE1-like protein

Source and Purity:

Rabbit polyclonal antibodies were produced by immunizing animals with a GST-fusion protein containing the C-terminal region of human GLE1. Antibodies were purified by affinity purification using immunogen.

Storage Buffer and Condition:

Supplied in 1 x PBS (pH 7.4), 100 ug/ml BSA, 40% Glycerol, 0.01% NaN₃. Store at -20 °C. Stable for 6 months from date of receipt.

Species Specificity:

Human, Mouse

Tested Applications:

WB: 1:500-1:2,000 (detect endogenous protein*)

*: The apparent protein size on WB may be different from the calculated M.W. due to modifications.

Product Data:

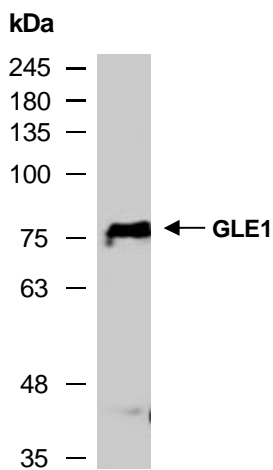


Fig 1. Western blot of total cell extracts from mouse thymus, using anti-GLE1 (C) (R3578-1) at RT for 2 h.