



Order: (888)-282-5810 (Phone)
(818)-707-0392 (Fax)
order@abiocode.com
Web: www.Abiocode.com

MAD2L2 (C) Antibody, Rabbit Polyclonal

Cat#: R3591-1

Quantity: 100 ul

Predicted | Observed M.W.: 24 | 27 kDa

Lot#: Refer to vial

Application: WB

Uniprot ID: Q9UI95

Background:

Mitotic arrest deficient 2-like protein 2 (MAD2L2) is an adapter protein able to interact with different proteins and involved in different biological processes. MAD2L2 mediates the interaction between the error-prone DNA polymerase zeta catalytic subunit REV3L and the inserter polymerase REV1, thereby mediating the second polymerase switching in translesion DNA synthesis. Translesion DNA synthesis releases the replication blockade of replicative polymerases, stalled in presence of DNA lesions. MAD2L2 may also regulate another aspect of cellular response to DNA damage through regulation of the JNK-mediated phosphorylation and activation of the transcriptional activator ELK1. In addition, MAD2L2 inhibits the FZR1- and probably CDC20-mediated activation of the anaphase promoting complex APC thereby regulating progression through the cell cycle. MAD2L2 also regulates TCF7L2-mediated gene transcription and may play a role in epithelial-mesenchymal transdifferentiation.

Other Names:

Mitotic spindle assembly checkpoint protein MAD2B, Mitotic arrest deficient 2-like protein 2, MAD2-like protein 2, REV7 homolog, hREV7, MAD2B, REV7

Source and Purity:

Rabbit polyclonal antibodies were produced by immunizing animals with a GST-fusion protein containing the C-terminal region of human MAD2L2. Antibodies were purified by affinity purification using immunogen.

Storage Buffer and Condition:

Supplied in 1 x PBS (pH 7.4), 100 ug/ml BSA, 40% Glycerol, 0.01% NaN₃. Store at -20 °C. Stable for 6 months from date of receipt.

Tested Applications:

WB: 1:500-1:2,000 (detect endogenous protein*)

*: The apparent protein size on WB may be different from the calculated M.W. due to modifications.

Species Specificity:

Human, Mouse

Product Data:

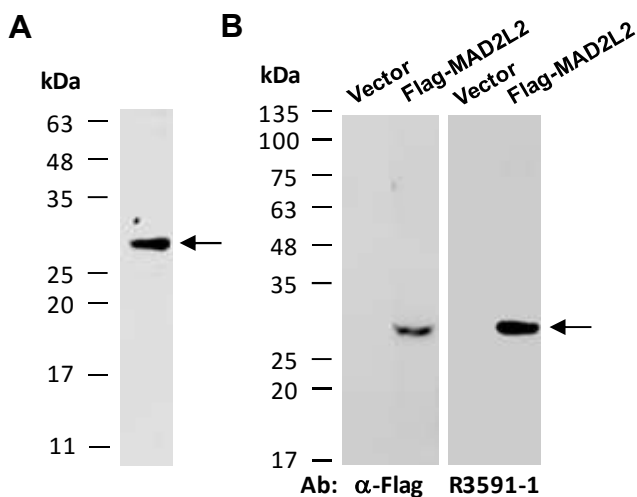


Fig 1. A) Western blot of total cell extracts from human THP1, using anti-MAD2L2 (C) (R3591-1) at RT for 2 h. **B)** Same as in A except that protein extracts from human 293T cells transfected with a vector or Flag-MAD2L2 were used.