



Order: (888)-282-5810 (Phone)
(818)-707-0392 (Fax)
order@abiocode.com
Web: www.Abiocode.com

DCLK2 (C) Antibody, Rabbit Polyclonal

Cat#: R2516-2

Quantity: 100 ul

Predicted | Observed M.W.: 84 | 100 kDa

Lot#: Refer to vial

Application: WB

Uniprot ID: Q8N568

Background:

Serine/threonine-protein kinase DCLK2 belongs to the protein kinase superfamily, the CAMK Ser/Thr protein kinase family, and the CaMK subfamily. DCLK2 is a protein kinase with a significantly reduced C(a2+)/CAM affinity and dependence compared to other members of the CaMK family. DCLK2 may play a role in the down-regulation of CRE-dependent gene activation probably by phosphorylation of the CREB coactivator CRTC2/TORC2 and the resulting retention of TORC2 in the cytoplasm.

Other Names:

Serine/threonine-protein kinase DCLK2, CaMK-like CREB regulatory kinase 2, CL2, CLICK-II, CLICK2, Doublecortin domain-containing protein 3B, Doublecortin-like and CAM kinase-like 2, Doublecortin-like kinase 2, DCAMKL2, DCDC3B, DCK2

Source and Purity:

Rabbit polyclonal antibodies were produced by immunizing animals with a GST-fusion protein containing the C-terminal region of human DCLK2. Antibodies were purified by affinity purification using immunogen.

Storage Buffer and Condition:

Supplied in 1 x PBS (pH 7.4), 100 ug/ml BSA, 40% Glycerol, 0.01% NaN₃. Store at -20 °C. Stable for 6 months from date of receipt.

Species Specificity:

Human, Mouse

Tested Applications:

WB: 1:1,000-1:3,000 (detect endogenous protein*)

*: The apparent protein size on WB may be different from the calculated M.W. due to modifications.

Product Data:

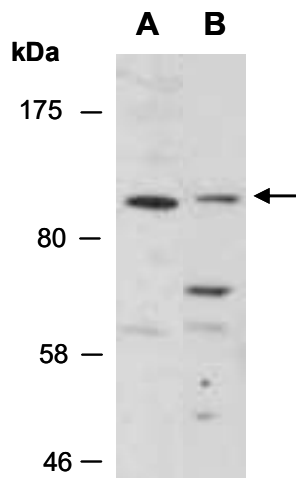


Fig 1. Western blot of total cell extracts from (A) human HeLa, (B) human Jurkat; using anti-DCLK2 (C) (R2516-2) at RT for 2 h.