



Order: (888)-282-5810 (Phone)
(818)-707-0392 (Fax)
order@abiocode.com
Web: www.Abiocode.com

IL23A (N3) Antibody, Rabbit Polyclonal

Cat#: R0307-6

Quantity: 100 ul

Predicted | Observed M.W.: 21 kDa

Lot#: Refer to vial

Application: WB, ELISA

Uniprot ID: Q9NPF7

Background:

Interleukin-23 subunit alpha (IL23A) belongs to the IL-6 superfamily and associates with IL12B to form the IL-23 interleukin, a heterodimeric cytokine which functions in innate and adaptive immunity. IL-23 may constitute with IL-17 an acute response to infection in peripheral tissues. IL-23 induces autoimmune inflammation and thus may be responsible for autoimmune inflammatory diseases and may be important for tumorigenesis.

Other Names:

Interleukin-23 subunit alpha, IL-23 subunit alpha, IL-23-A, Interleukin-23 subunit p19, IL-23p19, SGRF

Source and Purity:

Rabbit polyclonal antibodies were produced by immunizing animals with a GST-fusion protein containing the N-terminal region of human IL23A. Antibodies were purified by affinity purification using immunogen.

Storage Buffer and Condition:

Supplied in 1 x PBS (pH 7.4), 100 ug/ml BSA, 40% Glycerol, 0.01% NaN₃. Store at -20 °C. Stable for 6 months from date of receipt.

Species Specificity:

Human, Mouse*

*: Predicted. The antigen used has 88% identity with mouse IL23A.

Tested Applications:

WB: 1:1,000-1:3,000 (detect endogenous and recombinant IL-23A protein*)

ELISA: 1:1,000- 1:10,000 (detect native recombinant protein in a direct ELISA assay). Suitable for using as ELISA capture or detection antibody.

*: The apparent protein size on WB may be different from the calculated M.W. due to modifications.

Product Data:

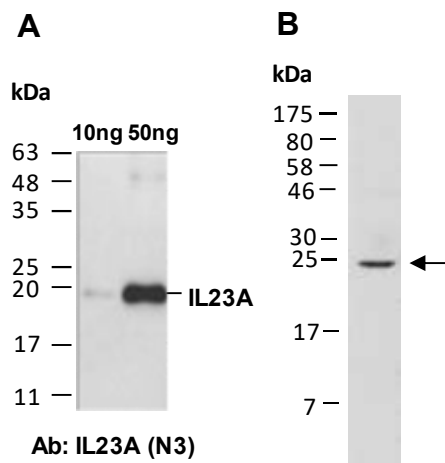


Fig 1. A) Western blot of recombinant human IL-23A protein (10ng or 50ng as indicated), using anti-IL23A (N3) (R0307-6) at RT for 2 h. **B)** Same as in **A)** except cell extracts from human Jurkat was analyzed with anti-IL23A (N3) (R0307-6) at RT for 2 h.