



Order: (888)-282-5810 (Phone)  
(818)-707-0392 (Fax)  
[order@abiocode.com](mailto:order@abiocode.com)  
Web: [www.Abiocode.com](http://www.Abiocode.com)

---

## LRBA (M) Antibody, Rabbit Polyclonal

**Cat#: R3593-1**

**Quantity: 100 ul**

**Predicted | Observed M.W.: 319 kDa**

**Lot#: Refer to vial**

**Application: WB**

**Uniprot ID: P50851**

### **Background:**

LRBA (Lipopolysaccharide-responsive and beige-like anchor protein) may be involved in coupling signal transduction and vesicle trafficking to enable polarized secretion and/or membrane deposition of immune effector molecules.

### **Other Names:**

Beige-like protein, CDC4-like protein, BGL, CDC4L, LBA

### **Source and Purity:**

Rabbit polyclonal antibodies were produced by immunizing animals with a GST-fusion protein containing the middle region of human LRBA protein. Antibodies were purified by affinity purification using immunogen.

### **Storage Buffer and Condition:**

Supplied in 1 x PBS (pH 7.4), 100 ug/ml BSA, 40% Glycerol, 0.01% NaN<sub>3</sub>. Store at -20 °C. Stable for 6 months from date of receipt.

### **Species Specificity:**

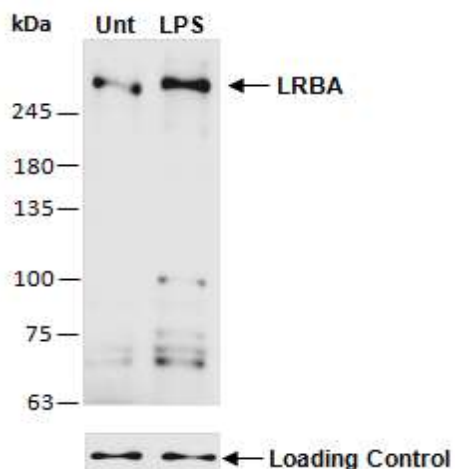
Human, Mouse

### **Tested Applications:**

WB: 1:500-1:2,000 (detect endogenous protein\*)

\*: The apparent protein size on WB may be different from the calculated M.W. due to modifications.

**Product Data:**



**Fig 1.** Western blot analysis of equal amounts of protein extracts from human THP1 monocytes untreated (Unt) or treated with LPS (20ng/ml) for 20hr as indicated, using anti-LRBA (M) (RR3593-1) at RT for 2 hr. LRBA is known to be induced by LPS stimulation.