



Order: (888)-282-5810 (Phone)
(818)-707-0392 (Fax)
order@abiocode.com
Web: www.Abiocode.com

Tubulin A (N) Antibody, Mouse Monoclonal

Cat#: M0267-1b

Quantity: 100 ul

Predicted M.W.: 50 kDa

Isotype: Mouse IgG1

Lot#: Refer to vial

Application: WB

Uniprot ID: Q71U36

Clone: 2A1

Background:

Microtubules of the eukaryotic cytoskeleton perform essential and diverse functions and are composed of a heterodimer of alpha and beta tubulins. The genes encoding these microtubule constituents belong to the tubulin superfamily, which is composed of six distinct families. Genes from the alpha, beta and gamma tubulin families are found in all eukaryotes. The alpha and beta tubulins represent the major components of microtubules, while gamma tubulin plays a critical role in the nucleation of microtubule assembly. There are multiple alpha and beta tubulin genes, which are highly conserved among species. Tubulin A1A encodes alpha tubulin and is highly similar to mouse and rat Tuba1 gene.

Other Names:

Tubulin alpha-1A chain, Alpha-tubulin 3, Tubulin B-alpha-1, Tubulin alpha-3 chain, TUBA1A, TUBA3

Source and Purity:

Mouse monoclonal antibodies were produced by immunizing animals with a GST-fusion protein containing the N-terminal region of human Tubulin A1A. Antibodies were purified by Caprylic Acid-Ammonium Sulfate precipitation.

Storage Buffer and Condition:

Supplied in 1 x PBS (pH 7.4), 40% Glycerol, 0.02% Thimerosal. Store at -20 °C. Stable for 6 months from date of receipt.

Species Specificity:

Human, Mouse

Tested Applications:

WB: 1:1,000-1:3,000 (detect endogenous protein*)

*: The apparent protein size on WB may be different from the calculated M.W. due to modifications.

Product Data:

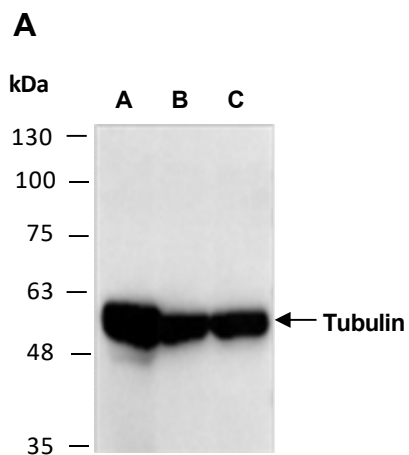


Fig 1. Western blot of total cell extracts from A) mouse brain; B) human HeLa; C) human Jurkat; using anti-Tubulin A (N) (M0267-1b) at RT for 2 h.