



Order: (888)-282-5810 (Phone)
(818)-707-0392 (Fax)
order@abiocode.com
Web: www.Abiocode.com

PIF3 (C2) Antibody, Rabbit Polyclonal

Cat#: R3392-4

Quantity: 100 ul

Predicted | Observed M.W.: 57 | 65 kDa

Lot#: Refer to vial

Application: WB

Uniprot ID: O80536

Background:

PIF3 is a transcription factor acting positively in the phytochrome signaling pathway. PIF3 activates transcription by binding to the G box (5'-CACGTG-3').

Other Names:

Transcription factor PIF3, Basic helix-loop-helix protein 8, AtbHLH8, bHLH 8, Phytochrome-associated protein 3, Phytochrome-interacting factor 3, Transcription factor EN 100, bHLH transcription factor bHLH008, BHLH8, EN100, PAP3, At1g09530, F14J9.19

Source and Purity:

Rabbit polyclonal antibodies were produced by immunizing animals with a GST-fusion protein containing the C-terminal region of *arabidopsis thaliana* PIF3 (AT1G09530). Antibodies were purified by affinity purification using immunogen.

Storage Buffer and Condition:

Supplied in 1 x PBS (pH 7.4), 100 ug/ml BSA, 40% Glycerol, 0.01% NaN₃. Store at -20 °C. Stable for 6 months from date of receipt.

Species Specificity:

Arabidopsis thaliana

Tested Applications:

WB: 1:500-1:2,000 (detect endogenous protein*)

*: The apparent protein size on WB may be different from the calculated M.W. due to modifications.

Product Data:

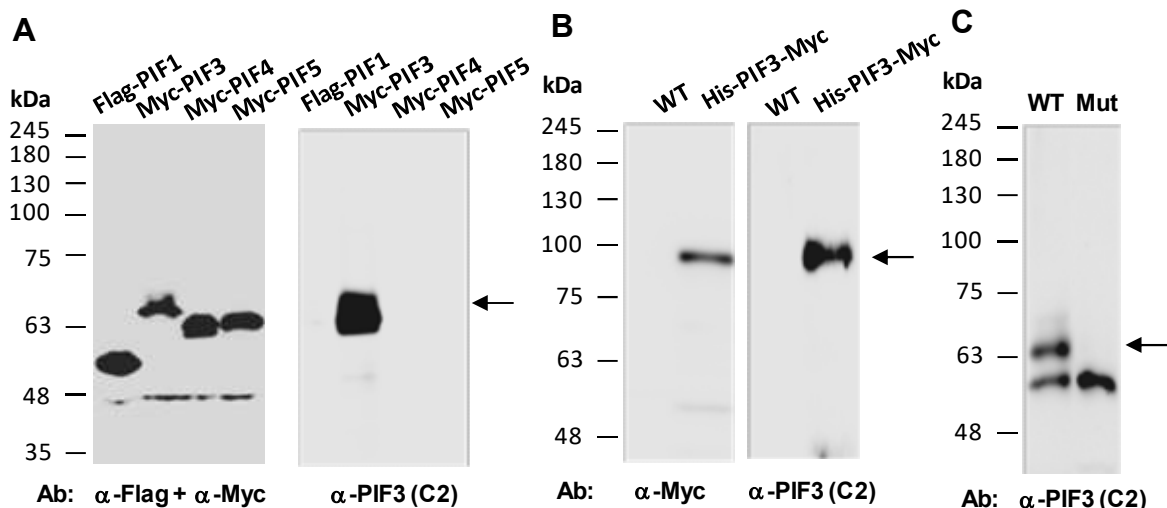


Fig 1. A) Specificity test of PIF3(C2) antibody. Western blot of total protein extracts from human 293T cells transfected with Flag-tagged Arabidopsis PIF1, Myc-tagged Arabidopsis PIF3, PIF4 or PIF5, using a mixture of anti-Flag and anti-Myc Abs or anti-PIF3 (C2) (R3392-4) Ab as indicated at RT for 2h. **B)** Western blot analysis of protein extracts prepared from adult leaves of wild type (WT) and transgenic plant expressing 6xHis-PIF3-5xMyc protein (His-PIF3-Myc) grown in dark for 4 days, using anti-PIF3 (C2) (R3392-4) at RT for 2 h. **C)** Same as B except that protein samples were prepared from wild type (WT) or *pifq* mutant (Mut, PIF1/3/4/5-deficient mutant) grown in dark for 4 days, using anti-PIF3 (C2) (R3392-4) at RT for 2 h. All protein samples were prepared using 4xSDS sample buffer.