



Order: (888)-282-5810 (Phone)
(818)-707-0392 (Fax)
order@abiocode.com
Web: www.Abiocode.com

EBF1 (N) Antibody, Rabbit Polyclonal

Cat#: R3496-1

Quantity: 100 ul

Predicted | Observed M.W.: 67 kDa

Lot#: Refer to vial

Application: WB

Uniprot ID: Q9SKK0

Background:

EBF1 is a component of the SCF(EBF1) E3 ubiquitin ligase complexes, which may mediate the ubiquitination and subsequent proteasomal degradation of target proteins (probably including EIN3 and EIL1). EBF1 is a regulator of the ethylene signaling cascade by modulating the stability of EIN3 and EIL1 proteins. EBF1 confers insensitivity to ethylene.

Other Names:

EIN3-binding F-box protein 1, F-box/LRR-repeat protein 6, FBL6, At2g25490, F13B15.15

Source and Purity:

Rabbit polyclonal antibodies were produced by immunizing animals with a GST-fusion protein containing the N-terminal region of *arabidopsis thaliana* EBF1 (At2g25490). Antibodies were purified by affinity purification using immunogen.

Storage Buffer and Condition:

Supplied in 1 x PBS (pH 7.4), 100 ug/ml BSA, 40% Glycerol, 0.01% NaN₃. Store at -20 °C. Stable for 6 months from date of receipt.

Species Specificity:

Arabidopsis thaliana

Tested Applications:

WB: 1:500-1:2,000 (detect endogenous protein*)

*: The apparent protein size on WB may be different from the calculated M.W. due to modifications.

Product Data:

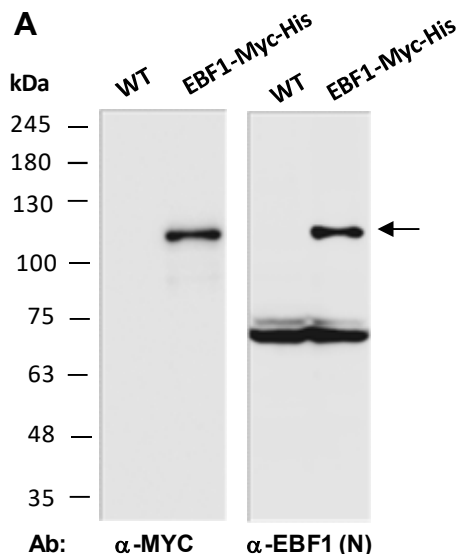


Fig 1. A) Western blot analysis of protein extracts prepared from MG132-treated (4 hr) adult leaves of wild type (WT) and transgenic *Arabidopsis* plants expressing EBF1 protein with 9xMyc-6xHis tag (EBF1-Myc-His), using anti-MYC (R0112-1) or anti-EBF1 (N) (R3496-1) (1:1000 dilution) at RT for 2 hr as indicated. Protein extracts were prepared by adding 50ul of 4xSDS sample buffer per 0.1g of grinded adult plant leaves.